

Paramount Center for the Arts

Technical Information

Updated 7/2025

913 West Saint Germain Street St. Cloud, Minnesota 56301

Box Office: 320.259.5463

For Technical & Production questions please contact:

Tim Catlett

Technical Director

Email: tcatlett@paramountarts.org

Office: (320) 257-3124

Cell (Please Text): (320) 309-4915



Note: All dimensions, conditions, equipment, and policies stated herein are subject to change or revision without notice. As an active community-oriented roadhouse, with a variety of clientele, all information presumes a full return to clear-stage and repertory status, though that status is not guaranteed. Please confirm any concerns or questions in advance of arrival.

Paramount Center for the Arts

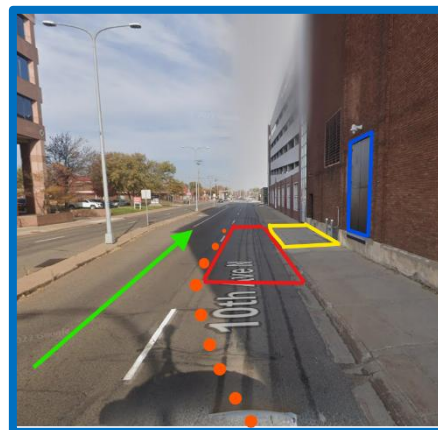
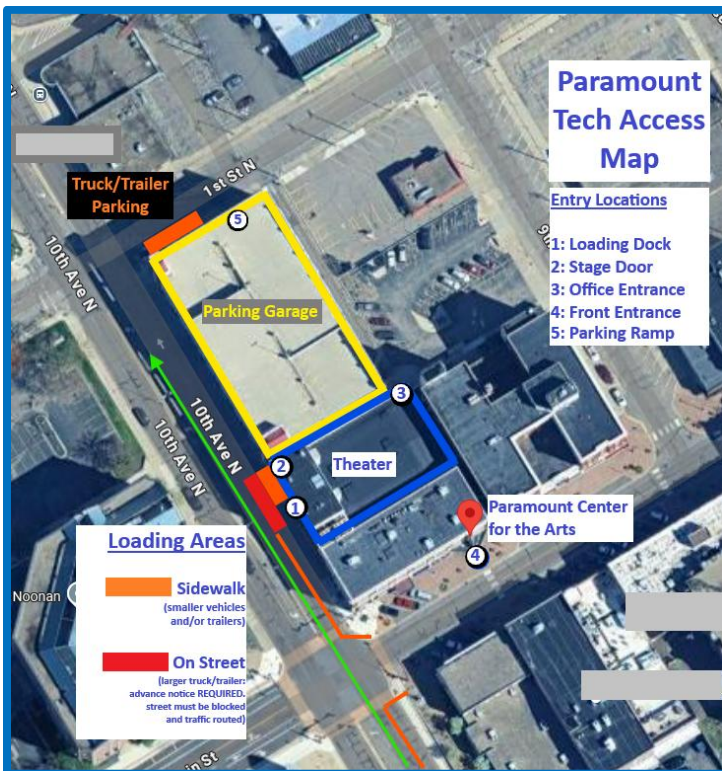
Stage Information

Stage Specifications

- Playing Space: 47' – 0" Deep X 40' – 0" Wide
- Proscenium:
 - Width: 39' – 11"
 - Height: 21' – 8"
- Smoke Pocket/Fire Curtain: 8" deep from Plaster Line
- Depth: 29' – 0"
- Apron: 6' – 0"
- Sound/Lighting Booth: (at back of main level of seating)
 - Dimensions: ~31' W x 8' D (Road Console space: ~11' W x 8' D)
 - Followspot Booth: Available on request
- Orchestra Pit:
 - Width: 40' – 0"
 - Stage Depth: 12' – 0" at Centerline, 8' – 0" at SR/SL
 - Pit Depth: 10' – 10"
 - Height (at stage edge): 2' – 10"
 - Accessible at lower limit to Green Room and Pit Storage
 - Loading Doors: 5' – 10"H x 5' – 4"W
- SR Wing: (DS) 12' – 0" → (US) 10' – 2"
- SL Wing: (DS) 12' – 0" → (US) 9' – 0" (~20' – 6" from Plaster Line)
- Crossover (behind Cyc): 4' – 0"
- Grid Height: 44' – 0"
 - Effective Fly Space: 40' – 0"
- Stage Loading: approx. 100lbs per sq/ft
- Utility Power/Company Switch
 - Utility:
 - 20A circuits: Seven (7) available onstage, four (4) empty
 - Company Switch:
 - SL Mezzanine
 - PCA Staff connection/tie-in ONLY, or by Technical Director approval
 - 400A – 3-phase
 - Bare-wire connection only – Cam connection unavailable
 - Tails not provided
- Seating
 - Capacity: 806
 - Main Level: 495
 - Balcony: 290
 - ADA: 8

Loading Dock *(See Aerial Map and reference photos below)*

- **CRITICAL:** Loading via blocked active traffic lane(s) and/or adjacent sidewalk of traffic lane
- **DO NOT** park and load smaller/personal vehicles from unblocked active traffic lane
- Communicate **ALL** loading needs **well in advance** with Technical Director
- **POLICY:**
 - No loading between 7:00am – 8:30am, or 4:00pm – 5:30pm, or by explicit approval **ONLY**
 - Contact Paramount Staff 30min prior to arrival
 - Cars, Vans, or Pickup Trucks – Park on, and load from, sidewalk
 - Box Truck/Boat, Truck/Trailer, Semi: Advance Approval ONLY - Lane closure required
 - Long or Large Vehicle Parking: Subject to advance
 - Smaller vehicles may park in the adjacent Paramount ramp for a nominal city fee
 - Extreme Loads: Advance Required
 - Double Lane Closure:
 - Advanced Approval required
 - Coordination with City Services required
- **NOTE:** No Ramp or Dock Lift available (see below for heavy and/or rolling items)
- Location Relative to Stage Surface:
 - Direct Access – Upstage Center Wall
- Loading Doors: 7' – 8" W x 6' 10" H
 - Upper Leaf Doors increase Height to 13' – 7-1/2"
- Heavy Equipment/Roadcases/"Cadillacs":
 - Access Door SR enters Hallway to House
 - Maximum Piece Dimension: 32" W x 6' – 7" H (Door to House)
 - Pit Lift may be utilized for Equipment
- No Shore (Coach) Power available



Paramount Center for the Arts

Ancillary Information

Green Room/Dressing Rooms

- Fully appointed Green Room
 - Appliances/Equipment: Refrigerator, Microwave, Coffee Pot(s)
 - Fixtures/Furniture: Racks, Tables, Chairs, Couches
- Co-ed Dressing with separating curtain
 - Fixtures: Lighting Make-up counters, Racks, Lockers, Restrooms, Showers
- Single/Star Dressing Rooms are not available
- Large casts may be able to be accommodated via the use of other facility spaces. Clear and early advance discussion is required. Availability is not guaranteed.

Laundry *(please consult Paramount Staff)*

- Washer/Dryer
- Ironing Board/Iron
- Limited sewing supplies
- Mop/Bucket
- Utility/Industrial Sink

Storage

- Limited storage for short durations only
- Extraordinary storage needs must be discussed in advance

Diagrams, Plots, Layouts

- Some information included at end of this document
- Other information available by request or discussed during advance

Paramount Center for the Arts

Equipment/Systems Information

Sound Inventory:

- Hearing Assist System: Listen wireless system with [27] receivers
- Remote Monitor: Monitor to Green Room, Dressing Rooms, and Lobby if requested
- Production Communications: EarTec Wireless, [6] units
 - House SM to House Mgr via Radio
- Audio Panels: Diagram available on request
- Main Mix: (at rear of Main Level seating)
 - Yamaha DM7 XE Main Console
- Stage Rack(s)/Digital Snake(s):
 - Yamaha RIO 3224-D2 [SL]
 - Yamaha RIO 1608-D2 [SR]
- FOH Rack:
 - Signal Processing: BSS Soundweb London BLU-160 Digital Signal Processor
 - Limited @115db
 - MacStudio (2022) for A/V playback & recording
 - LG USB Blu-ray Drive & RME
 - Blu-ray/DVD/CD/Minidisc players available upon request
- House PA:
 - System Configuration:
 - 3-way tri-amped full range; L/R configuration
 - Mono ground subs on an Aux bus
 - Front fills on a Matrix bus
 - Total FOH amplifier power is 11,600W with the connected loads
 - L/R Speaker Configuration (each side, except for front fill):
 - [4] JBL VRX932LA
 - [2] Lab.Gruppen C48:4X Amplifiers
 - JBL VRX918S (sub: flown)
 - Lab.Gruppen C5:4X Amplifier
 - JBL SRX728S (sub: ground)
 - Lab.Gruppen C48:4X Amplifier
 - Front Fill: [6] JBL AC16 (along front edge of stage)
 - Lab.gruppen C28:4X Amplifier
 - Controller: Lab.Gruppen NLB 60E Nomadlink Bridge
- Stage Monitors:
 - [8] Mackie SRM450 Active
 - [5] Mackie SRM350 Active
- Direct Input Boxes (DIs):
 - [8] passive - stereo passive
 - [4] Behringer Ultra-DI – active

- Microphones
 - [4] Crown PCC-160
 - [5] Shure Beta 87a Wireless Handheld
 - [4] Rode NT5 Condenser mics
 - [7] Shure SM 58
 - [5] Shure SM 57
 - Shure Beta 87a
 - Audix DP2 Drum mic set:
 - D-1; [2] D-2 ; D-4 ; D-6
 - [4] Gooseneck clips
 - [4] Shure Beta 53 (headset)
 - AKG-C314
- Audio Accessories
 - Mic Stands:
 - [12] Straight (Round Base)
 - [15] Tripod Boom, Tall (13-black 2-silver)
 - [6] Tripod Boom, Short
 - [2] Tabletop
 - On-Stage MSA-9508 add-on stand bars
 - Tripod speaker stands
 - Assortment of turnarounds and adapters
- Cable:
 - 150ft 16x4 stage snake (16 inputs, 4 outputs)
 - [2] 10ft 8-channel sub snake (bundled mic cable)
 - [17] 10ft 3pin XLR male to female
 - [2] 15ft 3pin XLR male to female
 - [1] 20ft 3pin XLR male to female
 - [22] 25ft 3pin XLR male to female
 - [2] 30ft 3pin XLR male to female
 - [2] 50ft 3pin XLR male to female
 - [1] 100ft 3pin XLR male to female
 - [4] ¼" male x ¼" male TRS (assorted lengths)
- Acoustic Sound Equipment
 - Acoustic Ceiling w/lighting: Installed on Linesets #7 & #20
 - [9] Portable Acoustic Shell Towers
- Backline
 - Bass Rig – Gallien-Krueger 410 w/ Gallien-Krueger Backline 600 300w amp head
 - (2) Guitar Amplifier – Fender Twin (2x12)
 - Yamaha C7 Grand Piano
 - Yamaha Upright Piano
 - Assorted Guitar Stands

Lighting Inventory:

- Dimmers:
 - [1] ETC Sensor & [2] Unison
 - [144] 2.4KW Dimmers
 - [269] 20A Circuits - 2P&G (Stage Pin)
 - [191] Total circuit drops in Patch Bay
 - [78] – Permanent Locations (terminated to Sensor Rack)
 - [16] – Parallel Location drops to Patch
 - Pit Wall HL/R, 1st Box Boom HL/R, 2nd Box Boom HL/R, Balcony HL/R
 - [68] – Total Dimmers on Patchable Receptacles
 - [52] – Dimmers available in Patch Bay ([26] not in Rep Plot)
 - Designated H1-H20, & H97-H144 in Patch Bay
 - H1-H16 – Paralleled Circuits as above (terminated to Sensor Rack)
 - NOTE: Confirm parallel usage for availability (H5-H12 currently in Rep Plot)
 - H17-H20 – Sensor Dimmers 79-82 (terminated to Sensor Rack)
 - H97-H144 – Dimmer Receptacles (terminated to Unison Racks)
- Lighting Consoles:
 - ETC ION XE20 (with iPad Remote)
- Houselights:
 - Console or Architectural control
- Front of House Positions:
 - Follow Spot positions: 88' @ 12°
 - Back of balcony rails: 99' @ 13°
 - Front of balcony rail: 70' @ 14°
 - 2nd Cat: 54' @ 30°
 - 2nd Box Boom: 52' @ 25°
 - 1st Cat: 35' @ 51°
 - 1st Box Boom: 31' @ 45°
- Equipment Inventory
 - ETC Source 4 – 750W

Lens	#	Used	Free	Frame
10°	4	4	-	11.5"
19°	26	20	6	6.25"
26°	44	30	14	6.25"
36°	18	6	12	6.25"
50°	28	16	12	6.25"

- Chauvet COLORado 2-Quad Zoom Tour

Lens	#	Used	Free	Frame
LED	15	15	-	9"

- L&E 65-71 - 1K Cyc-lights (all hung) (11.75x10gel frame)

Lens	#	Used	Free	Frame
3-cell	6	6	-	11.75"W x 10"H

- Followspots:
 - (2) Lycian SuperArc 400 model 1266 (lamp: HTI-400/24 metal halide)
- Accessories:
 - [4] A-size pattern holders
 - [24] B-size pattern holders
 - [4] 7.5” gel frame Top Hats
 - [12] 7.5” gel frame Barn Doors
 - [6] 50lb boom bases
 - Pipe: [4] 14’; [2] 10’; [6] 7’
 - [8] single instrument “brake rotor” bases
- Assorted Lighting Cable Inventory not used in the house plot
- Variety of Stage-Pin and Edison Extensions/Adapters available
- **Please advance any extraordinary needs**

Video/Media:

NOTE: Please advance with Technical Director regarding media and file format(s), delivery, and device system(s).

- Projection:
 - Eiki LC-HDT 1000 10,000 Lumen Projector (mounted in the projection/spot booth)
 - Screens:
 - Cinema projection screen 30’x20’ (Lineset #4)
 - 20’x20’ projection screen (Lineset #16) Front/Rear Projection
 - Cyclorama Curtain
- Video Recording equipment:
 - NOTE: **ALL** video recording needs or requests **REQUIRE** a detailed advance meeting a minimum of three (3) weeks prior to event date
 - [2] GoPro Hero 7 Black w/ HDMI adapters & ¼-20 tripod mounts
 - Blackmagic Design Pocket Cinema 6k w/ Canon 24-105mm IS II USM Lens
 - Blackmagic Design ATEM MINI EXTREME ISO (HDMI 8-in, 2-out Switcher)
 - Magnus VT-4000 Fluid-head tripod
 - Camvate ¼-20 to 5/8-27 adapters
 - [3] Monoprice Blackbird 4K Pro HDBaseT Extender Kit, IR, 70m-PoC, RS-232, HDCP 2.2
 - [2] Monoprice Blackbird 4K Pro HDBaseT Extender Kit, 100m-PoH, RS-232, HDCP 2.2
 - Various CAT5e, CAT6, CAT7 cables; Limited lengths of HDMI Cables
 - Hardwired internet connection at FOH positions (~200Mbps down/~10Mbps up)
 - All media storage provided by client, or by explicit prior arrangement

Stage Equipment:

Dance Floor:

- Harlequin Studio (black, w/3mm pad) ~40’W x ~25’D

Risers:

- [6] 4ftx8ft Stage (w/8” or 16” legs)

Orchestra/Band Chairs & Music Stands:

- [52] Padded Gray Chairs w/chrome frames; [70] Music Stands; [25] Music Stand Lights

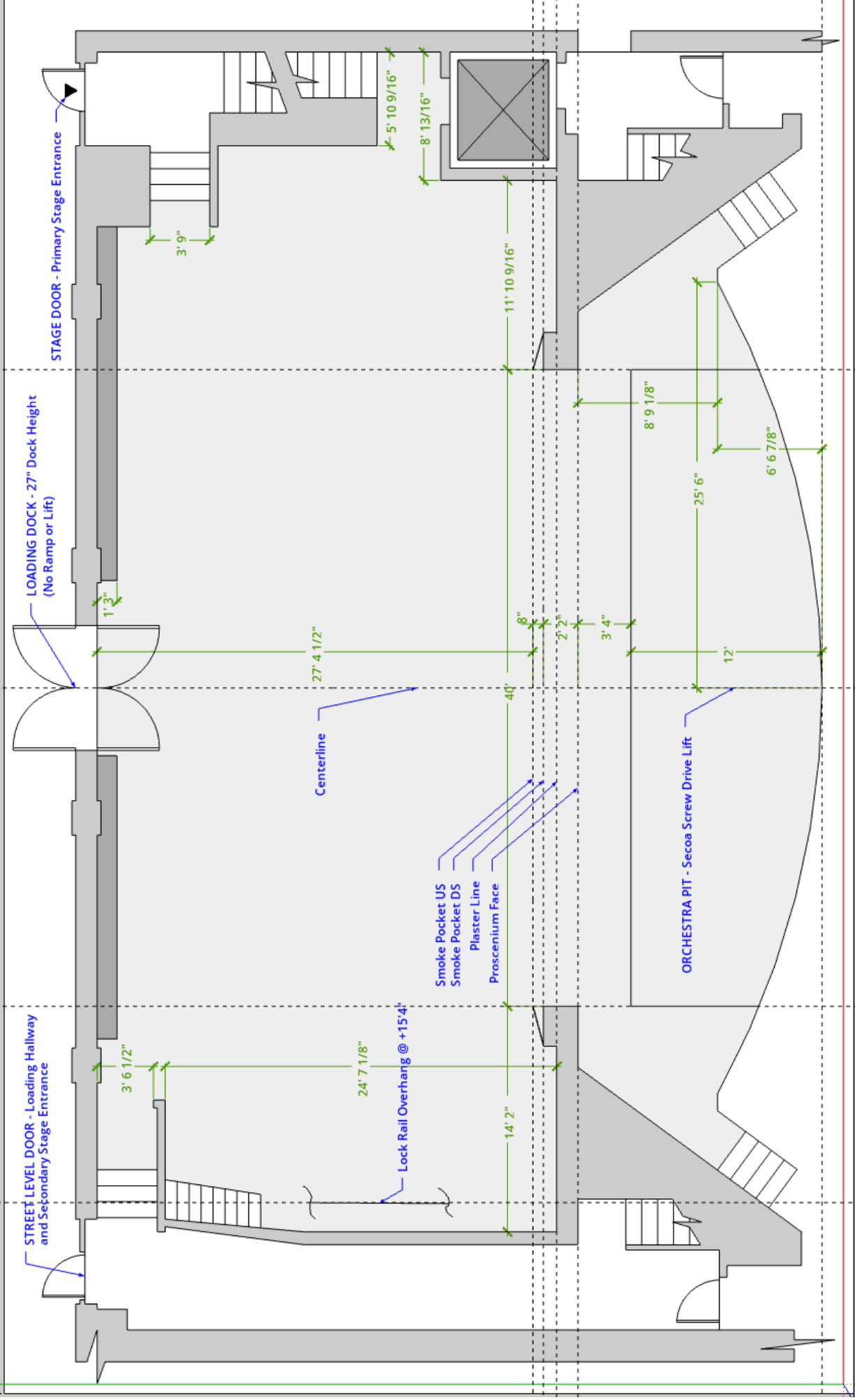
Paramount Center for the Arts
Mainstage Lineset Schedule

Line	Description	Distance US	Removable
1	Grand Border - 48'w x 12'h, medium blue velour	1'-9"	Y
2	Grand Traveler - 44'w x 25'h, medium blue velour	2'-8.5"	N/A
3	OPEN	3'-5"	
4	Front Projection Screen (35'w x 20'h)	4'-0.5"	N/A
5	1st Electric	5'-8.5"	N/A
6	OPEN	6'-9.75"	
7	1st Sound Shell (Cloud)	7'-9.875"	N/A
8	1st Legs - 10'w x 25'h, black velour	8'-9.5"	Y
9	2nd Border - 48'w x 10'h, black velour	9'-6.75"	Y
10	2nd Electric	10'-10.5"	N/A
11	OPEN	11'-8.5"	
12	OPEN	12'-4.5"	
13	OPEN	13'-0.75"	
14	Mid-Stage Traveler - 44'w x 25'h, black velour	13'-8.75"	N/A
15	OPEN	14'-9"	
16	Upstage Projection Screen (20' x 20')	15'-7.75"	Y*
17	3rd Border - 48'w x 10'h, black velour	16'-4.5"	Y
18	2nd Legs - 10'w x 21'h, black velour	17'-0"	Y
19	3rd Electric	18'-2.75"	N/A
20	2nd Sound Shell (Cloud)	19'-6.5"	N/A
21	Rear Traveler - 44'w x 25'h, black velour	20'-10.5"	N/A
22	OPEN	22'-4.25"	
23	OPEN	23'-0.25"	
24	Cyclorama - 48'w x 25'h, muslin horiz. seamed	23'-8.25"	Y*

*Minimum 2-week advance notice REQUIRED

Counterweight Rigging System

- Double Purchase
- Available weight: 4200lbs
- Open Linesets: 8 (see Lineset Schedule)
- General Purpose Arbor Capacity: (8' arbor, 6" w weights) 1825lbs max.
- General Purpose Batten Capacity: 900lbs max., distributed
- Batten Lengths:
 - 1-22 = 52' 6"
 - 23 & 24 = 50'
- Batten Diameter: 2"
- Soft Goods
 - All soft goods are 50% fullness sewn in
 - Grand Drapes:
 - Border – 48'w x 12'h, medium blue velour
 - Traveler – 44'w x 25' h, medium blue velour
 - Legs – 10'w x 25'h, each side, black velour
 - Borders – 48'w x 10'h, black velour
 - Stage Travelers – 44'w x 25'h, black velour
 - Guillotine/Traveler
 - There are no scrims available
- Projection Screens:
 - Cinema Screen – lineset #4
 - 4'5" from plaster line
 - Front/Rear Projection Screen – lineset #16
 - 15'7.75" from plaster line
 - Only movable screen, pending minimum 2-weeks advance
 - Cyclorama Curtain – lineset #24
 - 23'8.25" from plaster line



Paramount Theatre Stage Power
20amp Circuit Layout

Stage Right

***Clean Circuits**

Stage Left

Back Wall:
R2A-26 R2A-26

Fly Loft:
R2A-33*

Counter Top
R2A-5

Behind Counter Top
R2A-5

On Deck (above work area):
R2A-36

Bottom of the Green Room Stairs:
R2A-5

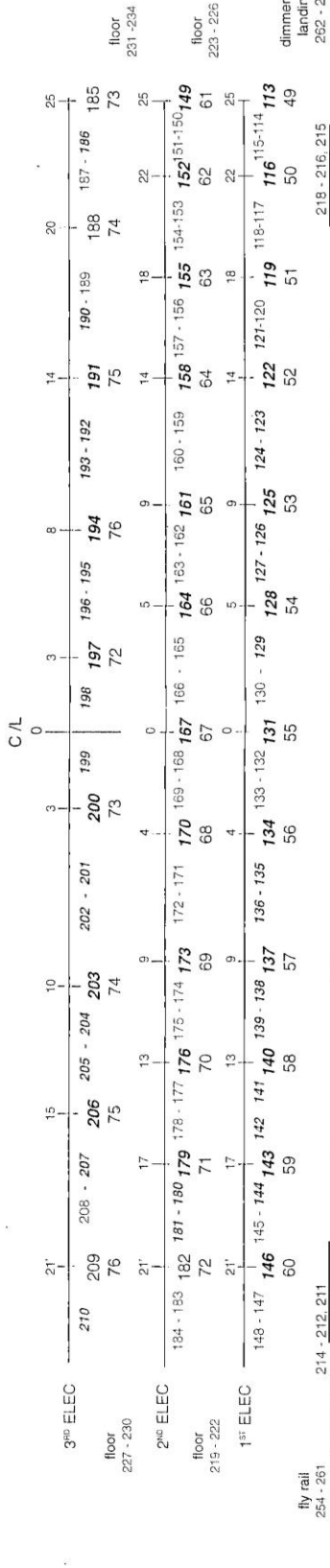
R2A-32/34
R2A-31
Proscenium Wall:
R2A-31

R5A-31
Proscenium Wall:
R5A-31

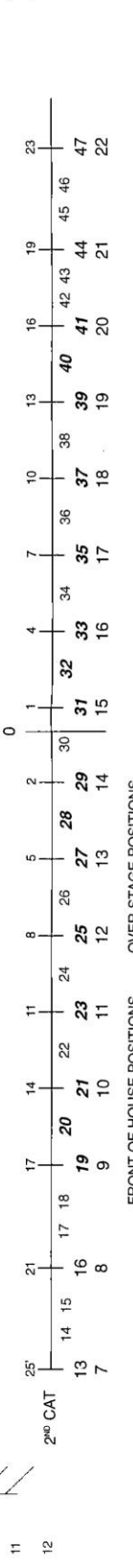
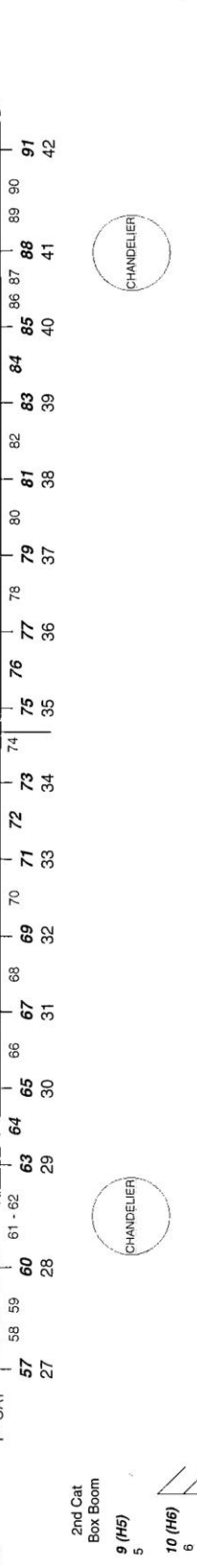
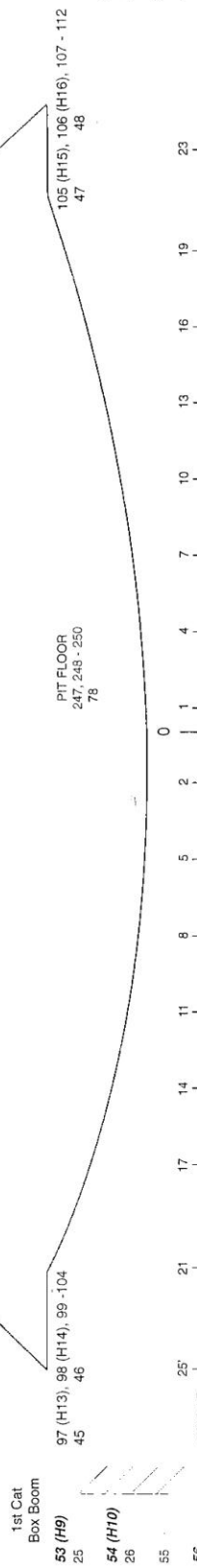
Pit
R2A-25

*additional circuits available in the dimmer room stage left
also: 2, 50ft, 3 quad box stringers
and 2, 25ft single quad box are available*

Back Wall 235 - 238 239 - 242 243 - 246



Paramount Theater..... Circuit / Dimmer Schedule



feet from center (0)
 Circuit used in house hang
 Dimmer

FRONT OF HOUSE POSITIONS
 Follow spot booth, 86' throw at 12"
 Back of balcony rails, 99' throw at 13"
 Front of balcony rail, 70' throw at 14"
 2nd Cat, 54' throw at 30"
 2nd Cat Box Boom, 52' throw at 25"
 1st Cat, 35' throw at 51"
 1st Cat Box Boom, 31' throw at 45"

OVER STAGE POSITIONS
 (from plaster line)
 1st Elec, 6' 2"
 2nd Elec, 10' 10"
 3rd Elec, 18' 2"

There are 269 circuits in the house.....
 with 78 dimmers to dedicated circuits.....
 and 68 dimmers (in the dimmer room) to accommodate undedicated circuits.....(H1 - H16 are in parallel with noted house circuits.)

5 (H3), 6 (H4)
 3 4

